

State of Wyoming Corner Record

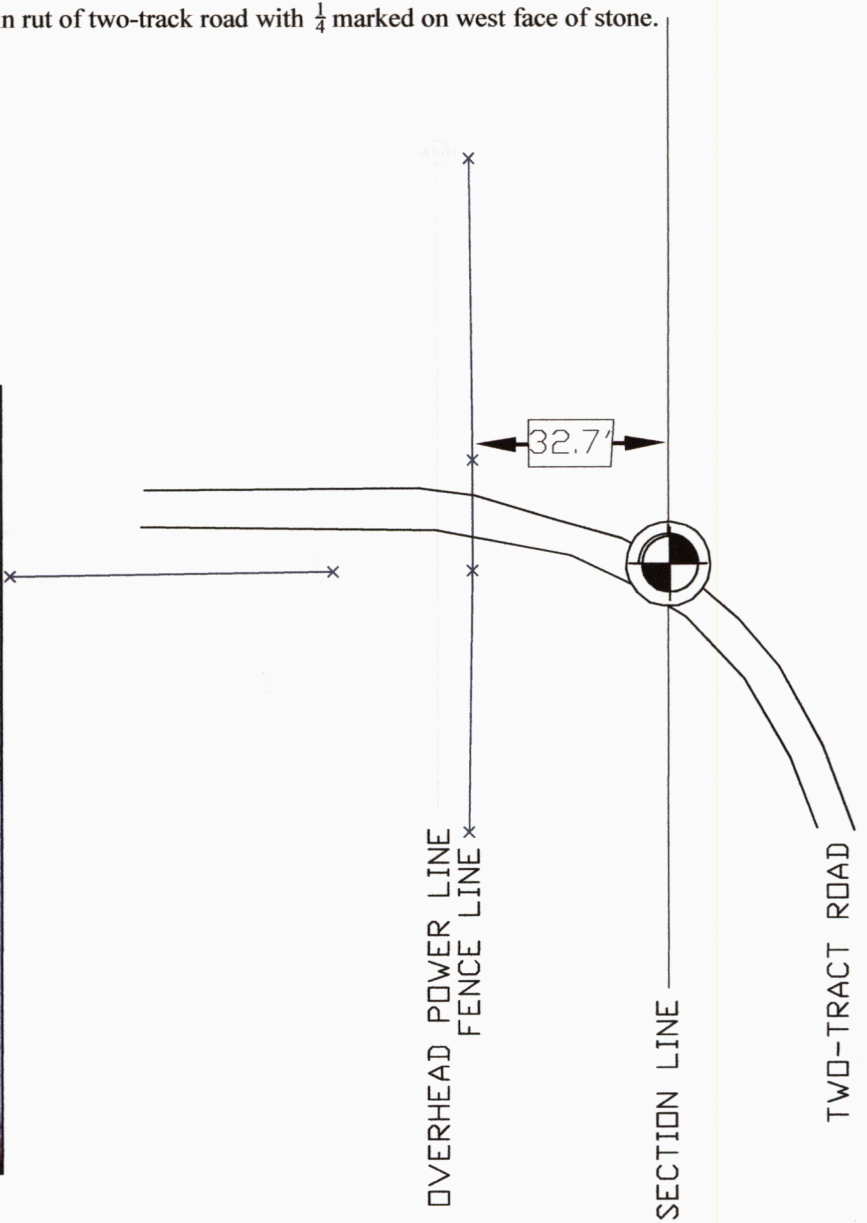
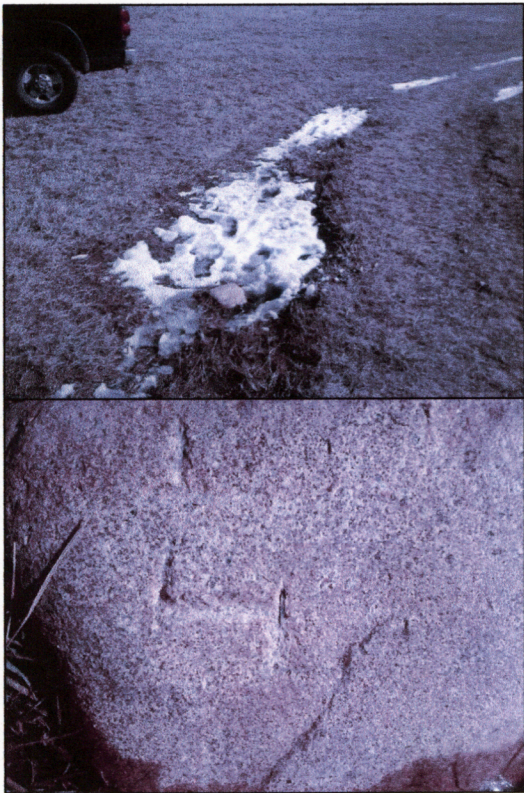
(In compliance with the **CORNER PERPETUATION AND FILING ACT**, Wyoming Statutes, 1997 Section 33-29-140 et. seq., and the Rules and Regulations of the Board of Professional Engineers and Professional Land Surveyors)

Reverse side of this form may be used if more space is needed.

Record of original survey and citation of source of historical information (if corner is lost or obliterated). Description of corner monumentation evidence found and/or monument and accessories established to perpetuate the location of this corner. Sketch of relative location of monument, accessories, and reference points with course and distance to adjacent corner(s) (if determined in this survey). Method and rationale for re-establishment of lost or obliterated corner.

Found: 8" north-south by 7" east-west stont in rut of two-track road with $\frac{1}{4}$ marked on west face of stone.

Set: Nothing



Date of Field Work: JAN. 12, 2014

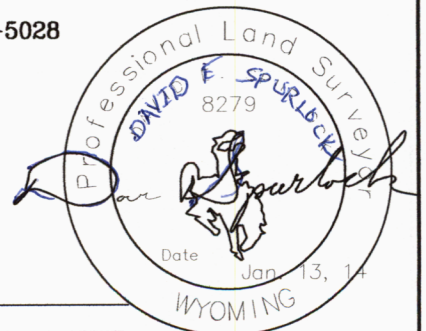
Office Reference: 20348

Firm/Agency, Address

Cross Index Plat

	1	2	3	4	5	6	7	8	9	10	11	12	13	14	15	16	17	18	19	20	21	22	23	24	25		
A																											A
B	+	+	+	+	+	+	+	+	+	+	+	+	+	+	+	+	+	+	+	+	+	+	+	+	+	+	B
C		6																									C
D	+	+	+	+	+	+	+	+	+	+	+	+	+	+	+	+	+	+	+	+	+	+	+	+	+	+	D
E																											E
F	+	+	+	+	+	+	+	+	+	+	+	+	+	+	+	+	+	+	+	+	+	+	+	+	+	+	F
G																											G
H	+	7																									H
J																											J
K	+	+	+	+	+	+	+	+	+	+	+	+	+	+	+	+	+	+	+	+	+	+	+	+	+	+	K
L																											L
M	+	18																									M
N																											N
O	+	+	+	+	+	+	+	+	+	+	+	+	+	+	+	+	+	+	+	+	+	+	+	+	+	+	O
P																											P
Q	+	19																									Q
R																											R
S	+	+	+	+	+	+	+	+	+	+	+	+	+	+	+	+	+	+	+	+	+	+	+	+	+	+	S
T																											T
U	+	30																									U
V																											V
W	+	+	+	+	+	+	+	+	+	+	+	+	+	+	+	+	+	+	+	+	+	+	+	+	+	+	W
X																											X
Y	+	31																									Y
Z																											Z

D. R. G. and Associates Inc.
 1414 Elk Street
 Rock Springs, WY 82901
 Telephone Number: 307-362-5028

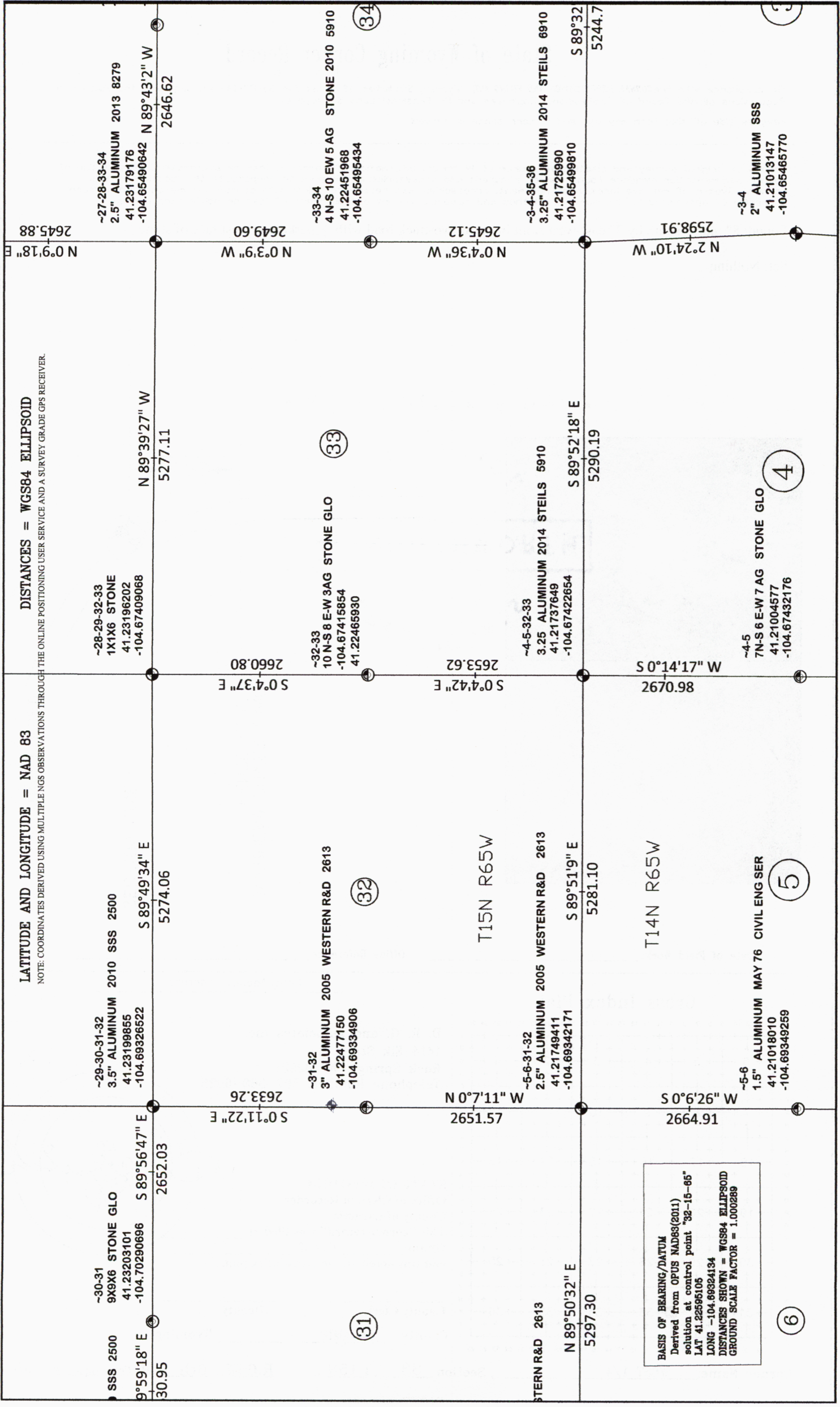


STATE OF WYOMING
 Office of Clerk of Recorder
 County of Laramie
 This "corner record" was filed at _____
 On the _____ day of _____
 and was noted on the cross-index plat.

County Clerk _____ Deputy _____
 County: LARAMIE, Wyoming

Corner Name: WEST 1/4, Section: 33, T.15N., R.65W., 6th P.M. Cross-Index No.: X9

LATITUDE AND LONGITUDE = NAD 83
 DISTANCES = WGS84 ELLIPSOID
 NOTE: COORDINATES DERIVED USING MULTIPLE NGS OBSERVATIONS THROUGH THE ONLINE POSITIONING USER SERVICE AND A SURVEY GRADE GPS RECEIVER.



BASIS OF BEARING/DATUM
 Derived from OPUS NAD83(2011)
 solution at control point "32-15-66"
 LAT 41.22595105
 LONG -104.69324134
 DISTANCES SHOWN = WGS84 ELLIPSOID
 GROUND SCALE FACTOR = 1.000289